

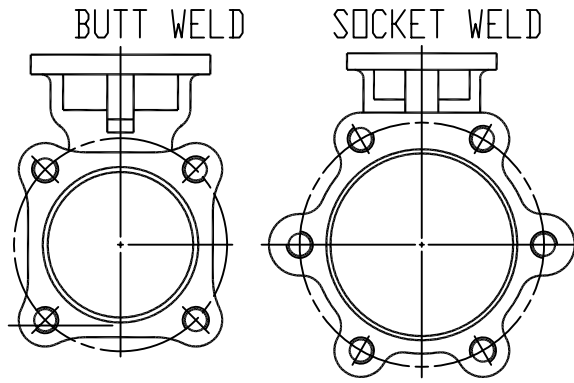
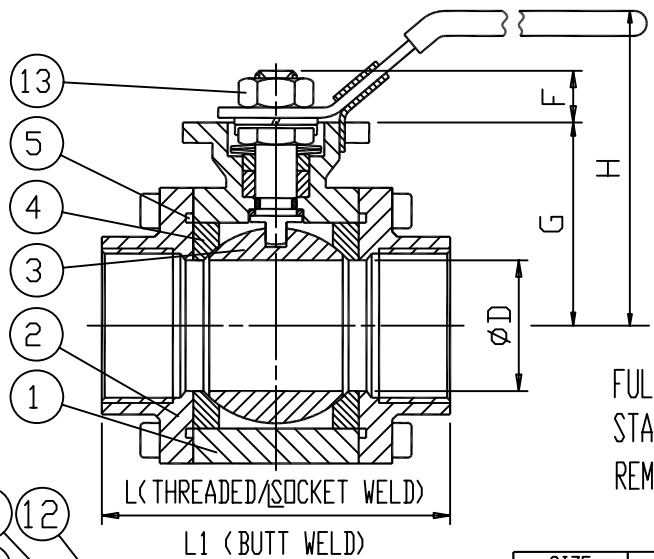
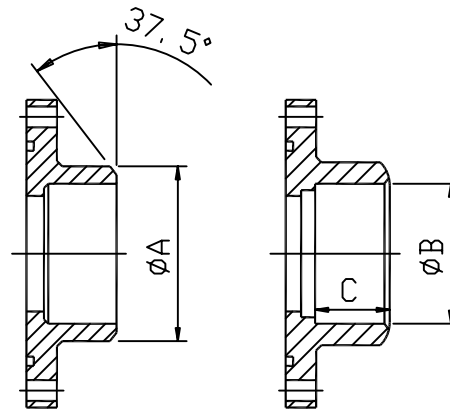
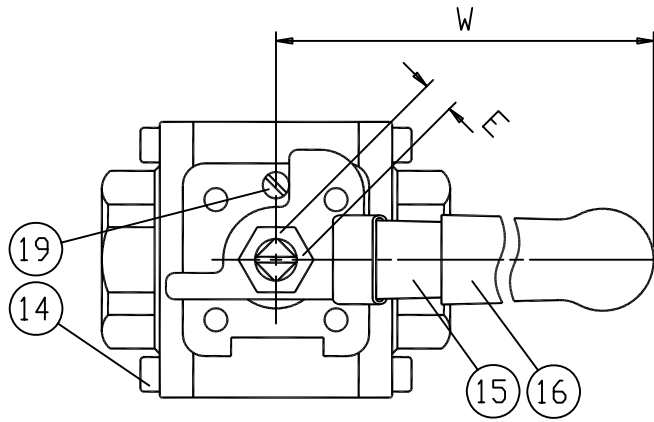
AF-35 SIZE: 1/4"-2" FIRE-SAFE API 607

3-PIECE FULL PORT and STANDARD PORT BALL VALVE  
 SCREWED ENDS, BUTT WELDED END, SOCKET WELDED END  
 ISO 5211 MOUNTING PAD  
 DIN 3202-M3 (SCREWED ENDS/SOCKET WELDED ENDS)  
 -S13 (BUTT WELDED ENDS)

PRESSURE: 2000 PSI (CLASS 800) W.O.G.  
 STAINLESS STEEL: 316 BODY, with 316 SS TRIM  
 CARBON STEEL: WCB BODY, with 316 SS TRIM  
 REMARK: 1/4" ~ 1/2" FULL BORE - NOT Direct Mounting  
 1/4" ~ 3/4" REDUCED BORE - NOT Direct Mounting

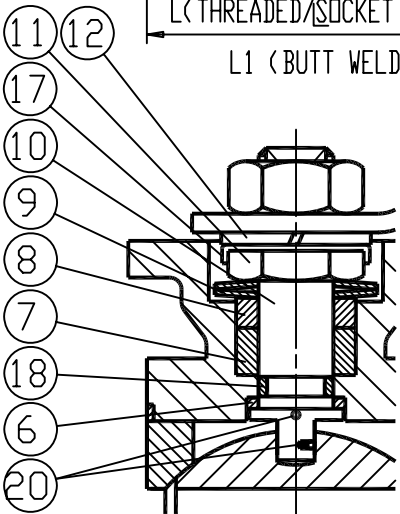
STANDARDS APPLICABLE

ASME B16.34-STEEL VALVES FLANGED, THREADED, AND WELDING END  
 ASME B1.20.1-PIPE THREADS, GENERAL PURPOSE  
 ASME B16.10-FACE TO FACE & END TO END DIMENSIONS OF VALVES  
 API 598-VALVE INSPECTION AND TESTING  
 MSS SP72-BALL VALVES WITH FLANGED OR BUTT WELDING  
 ENDS FOR GENERAL SERVICES  
 MSS SP25-STANDARD MARKING SYSTEM FOR VALVES FITTINGS,  
 FLANGES AND UNIONS

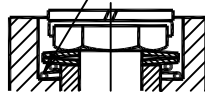


FULL PORT 1/4"-1 1/2"  
 STANDARD PORT 1/2"-2"  
 REMARK: 1/4" ~ 1/2" FULL BORE - NOT Direct Mounting  
 1/4" ~ 3/4" REDUCED BORE - NOT Direct Mounting

ITEM	DESCRIPTION	STAINLESS STEEL	CARBON STEEL	Q'TY
1	BODY	ASTM A351 CF8M	ASTM A216 WCB	1
2	END CAP	ASTM A351 CF8M	ASTM A216 WCB	2
3	BALL	ASTM A351 CF8M/316	ASTM A351 CF8M/316/304	1
4	SEAT		PTFE	2
5-1	GASKET		GRAPHITE	2
5-2			PTFE	2
6-1	THRUST WASHER		GRAPHITE	1
6-2			PTFE	1
7	STEM PACKING		GRAPHITE	1
8	GLAND		AISI 304	1
9	BELLEVILLE WASHER		AISI 301	2
10	STEM		ASTM A276 316	1
11	PACKING NUT		AISI 304	1
12	SPRING WASHER		AISI 304	1
13	HANDLE NUT		AISI 304	1
14	BOLT	ASTM A193 B8	ASTM A193 B7	8-12
15	HANDLE	AISI 304	ZINC PLATED STEEL	1
16	HANDLE GRIP		VINYL PLASTISOL	1
17	LOCK SADDLE		AISI 304	1
18	O-RING		VITON	1
19	STOPPER NUT	AISI 304	CARBON STEEL	1
20	ANTI-STATIC DEVICE		AISI 304	1-2



ANTI-STATIC DEVICE  
 FULL PORT 1/4"-1/2"  
 STANDARD PORT 1/4"-3/4"



SIZE	ØD		L		L1		E	F	G	H	W	ØA		ØB		C	ISO 5211 (F)	Weights (KG)	
	IN	MM	IN	MM	IN	MM						IN	MM	IN	MM				IN
1/4"	8												0.54	13.8	0.56	14.2			1.1
3/8"	10	0.43	11.0	2.55	65.0	2.75	70.0	0.35	9.0	0.31	8.0	1.47	37.5	2.75	70.0	0.39	10.0	F04	1.1
1/2"	15	0.55	14.0	2.95	75.0	2.95	75.0						0.85	21.7	0.86	21.8	0.51	13.0	1.1
3/4"	20	0.80	20.5	3.14	80.0	3.54	90.0	0.43	11.0	0.43	11.0	1.96	52.0	3.54	90.0	0.59	15.0	F04-F05	1.6
1"	25	0.98	25.0	3.54	90.0	3.93	100.0					2.36	60.0	3.93	100.0			2.2	
1 1/4"	32	1.24	31.5	4.33	110.0	4.33	110.0					2.83	72.0	4.40	112.0			3.3	
1 1/2"	40	1.45	37.0	4.72	120.0	4.92	125.0	0.55	14.0	0.67	17.0	2.99	76.0	4.52	115.0	8.46	215.0	F07	4.6
2"	50	1.96	50.0	5.51	140.0	5.90	150.0					3.66	93.0	5.23	133.0			7.3	

REV	DATE	DESCRIPTION	CODE	REVISOR	REMARKS	MATERIAL	APPROVE	CHECK	SCALE	FREE	UNIT	DRAWN BY	Peggy
						1/4"~2"						DATE	2006.08.29
						2000 PSI			PART NO	AF-35-AS370A		Q'TY	
						FIRE-SAFE			OTHER	DWG NO	AF-35-AS370A	TITLE	3-PC THREAD END BALL VALVE
						API 607							
						AF Inson		Anson Flow Corp.					