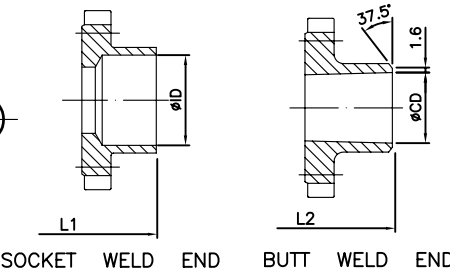
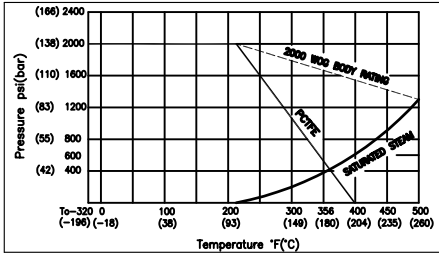


MODEL NO :AF-36C
3-PC DIRECT MOUNT BALL VALVE
 · Face to face complies with DIN3202-M3 S13
 · Each intrgated ISO-5211 Mounting Pad
 · Square Stem can be with direct Mount without Bracket/Adaptor.
 · Stem is with Blow-out Proof design as well as Anti-Static device.
 · Viton O-Ring on Stem gives extra support and assurance of tightness.
 · Stem seal is with 45 angle against stem, which increases tightening effect.
 · Except actuating service , handle lever is available for Manual Operation
 · Working Pressure :2000psi
 · SIZE : 1/2" ~ 2"
 · TEST PRESSURE
 SEAT(AIR):80PSI
 SHELL(HYDROSTATIC):3000PSI

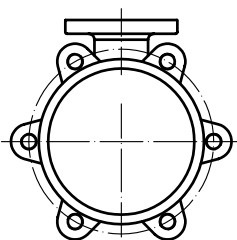
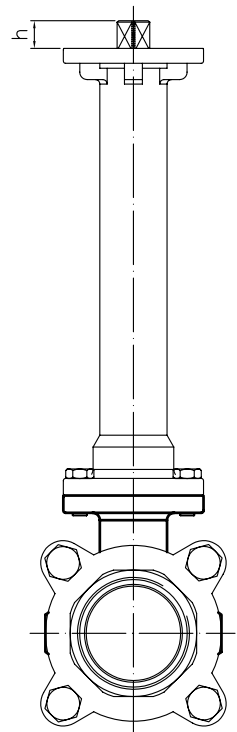
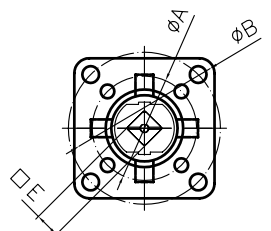
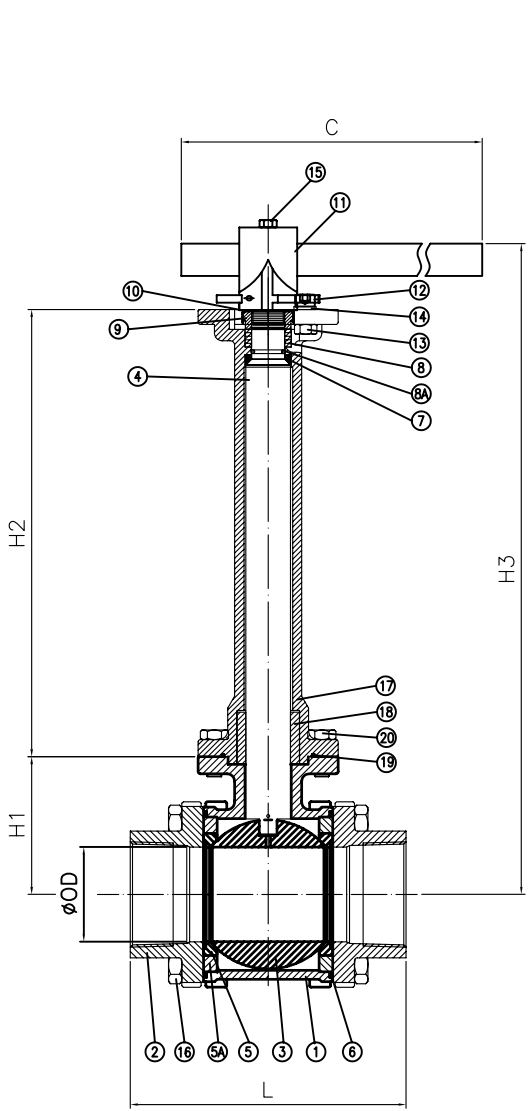


ITEM	DESCRIPTION	MATERIAL	QT'Y
1	Body	CF8M	1
2	End Cap	CF8M	2
3	Ball	CF8M	1
4	Anti Static Stem	17-4 PH SS	1
5	Ball Seat	PCTFE(KEL-F)	2
6	Body Seal	GRAFOIL	2
7	Thrust Washer	PCTFE(KEL-F)	1
8A	O-Ring	VITON	1
8	Stem Packing	PCTFE(KEL-F)	5
9	Stem Nut	SS304	1
10	Lock Saddle	SS304	1
11	Handle	SS304	1
12	Stop Bolt	SS304	1
13	Stop Nut	SS304	1
14	Stop Washer	SS304	1
15	Handle Bolt	SS304	1
16	Body Bolt	SS304	8
17	Handle Sleeve	VINYL	1
18	Extension	CF8M	1
19	Thrust Bearing	25%CARBPN/75%PTFE	1
20	Extension Gasket	GRAFOIL	1
21	Extension Bolt	SS304	4

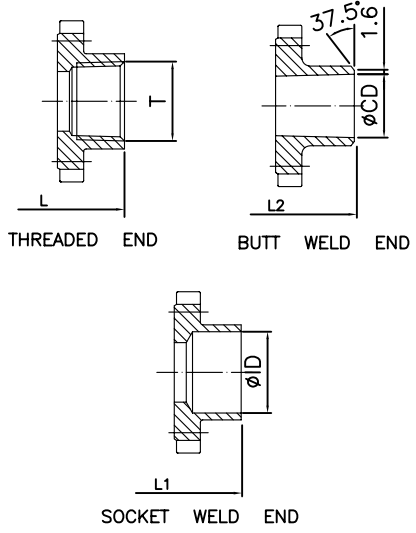


SIZE	øOD	øCD	øID	T	L	L1	L2	C	□E	øA	øB	H1	H2	H3	h
1/2"	15.0	15.8	22.0	NPT	75	75	75	156	9	F04		39.0	200	274	8
3/4"	20.0	20.9	27.4		80	80	90	156	9	F04		42.6	200	276	8
1"	25.0	26.6	34.1	PT	90	90	100	181	11	F05		47.2	200	287	10
1-1/4"	31.0	35.0	42.9		110	110	110	181	11	F05		51.2	200	292	10
1-1/2"	38.0	40.8	49.0	PF	120	120	125	295	14	F05	F07	58.5	300	403	13
2"	50.0	52.5	61.5		140	140	150	295	14	F05	F07	76.2	300	423	13

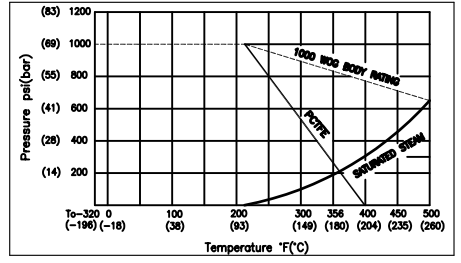
						1/2"~2"	MATERIAL	APPROVE	CHECK			DRAWN BY	awrence
						Class 800		SCALE	FREE	UNIT	mm	DATE	2008.12.19
						2000 PSI	OTHER	DWG NO	AF-36-3D0000-1C	TITLE	Cryogenic Direct Mount 3-PC Ball Valve		
REV	DATE	DESCRIPTION	CODE	REVISER	REMARKS	Anson Flow Corp.							



MODEL NO :AF-36C
3-PC DIRECT MOUNT BALL VALVE
 · Face to face complies with DIN3202-M3 S13
 · Each integrated ISO-5211 Mounting Pad
 · Square Stem can be with direct Mount without Bracket/Adaptor.
 · Stem is with Blow-out Proof design as well as Anti-Static device.
 · Viton O-Ring on Stem gives extra support and assurance of tightness.
 · Stem seal is with 45 angle against stem, which increases tightening effect.
 · Except actuating service, handle lever is available for Manual Operation
 · Working Pressure :1000psi
 · SIZE : 2-1/2" ~ 4"
 · TEST PRESSURE
 SEAT(AIR):80PSI
 SHELL(HYDROSTATIC):1500PSI



ITEM	DESCRIPTION	MATERIAL	QTY
1	Body	CF8M	1
2	End Cap	CF8M	2
3	Ball	CF8M	1
4	Anti Static Stem	17-4 PH SS	1
5	Ball Seat	PCITFE(KEL-F)	2
5A	Ball Seat	SS316	2
6	Body Seal	GRAFOIL	2
7	Thrust Washer	PCITFE(KEL-F)	1
8A	O-Ring	VITON	1
8	Stem Packing	PCITFE(KEL-F)	5
9	Stem Nut	SS304	1
10	Lock Saddle	SS304	1
11	Handle	SS304	1
12	Stop Bolt	SS304	1
13	Stop Nut	SS304	1
14	Stop Washer	SS304	1
15	Handle Bolt	SS304	1
16	Body Bolt	SS304	8
17	Extension	CF8M	1
18	Thrust Bearing	25%CARBPN/75%PTFE	1
19	Extension Gasket	GRAFOIL	1
20	Extension Bolt	SS304	4



SIZE	ØOD	ØCD	ØID	T	L	L1	L2	C	□E	ØA	ØB	H1	H2	H3	h	
2-1/2'	63.5	65.9	77.2	NPT	185	185	190	295	17	F07	F10	92.4	301	438	19	
3'	76.0	77.9	90.0	PT	205	205	220	395	17	F07	F10	101.9	301	448	19	
4'	97.0	102.3	115.4	PF	2999	240	240	270	495	22	F07	F10	123.5	301	469	21

						2-1/2"~4"	MATERIAL	APPROVE	CHECK		DRAWN BY	A	
								SCALE	FREE	UNIT	mm	DATE	2009.02.26
								PART NO	AF-36-3D0000-2A		Q'TY		
						1000 PSI	OTHER	DWG NO	AF-36-3D0000-2A	TITLE	Cryogenic Direct Mount		
											3-PC Ball Valve		
REV	DATE	DESCRIPTION	CODE	REVISER	REMARKS		AF <small>low</small> Anson Anson Flow Corp.						

