

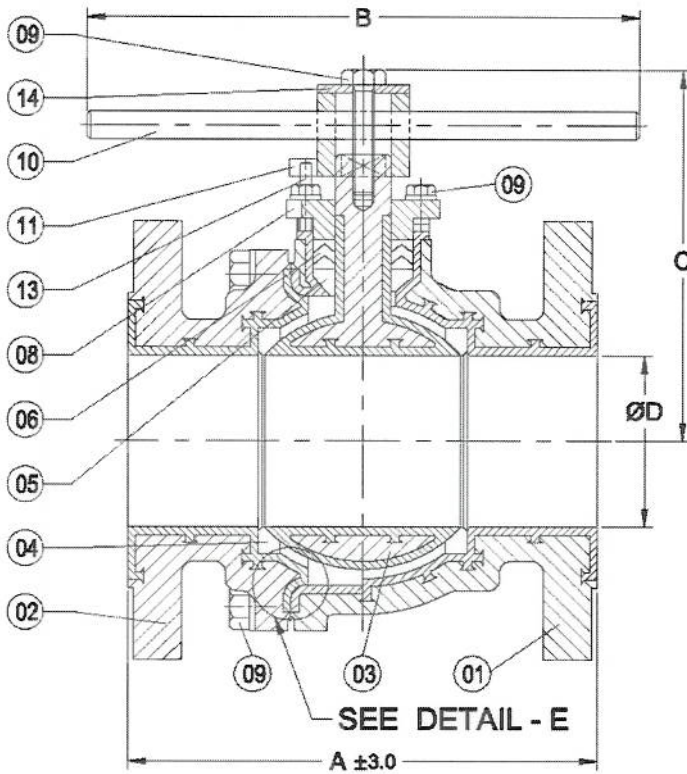
PFA / FEP LINED BALL VALVE - #150

DATE : 26. APR. 2007

DRG. NO : BV 4108

02  
REV. NO.

ADAPTER



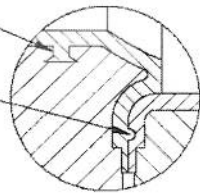
PT. NO.	PART NAME	MATERIAL
01	BODY	LINING : PFA / FEP SHELL : DUCTILE IRON
02	END PIECE	LINING : PFA / FEP SHELL : DUCTILE IRON
03	BALL / STEM	LINING : PFA / FEP CB7Cu -1 (17- 4PH)
04	SEAT RING	VIRGIN PTFE
05	TAPER RING	VIRGIN PTFE
06	'V' RING	VIRGIN PTFE
08	GLAND FOLLOWER	SS 304
09	FASTENERS	SS 304
10	LEVER	STEEL
11	ADAPTER	CS
12	STUD / NUT	304
13	LEVER STOPPER PIN	304
14	WASHER - ADAPTER	STEEL

NOTE :

- ONLY DIMENSION 'A' IS CERTIFIED & CONFORMS TO ASME B16.10 / EN 558-2, OTHER DIMENSIONS & WEIGHTS ARE ONLY INDICATIVE.
- FLANGE DRILLING AS PER :
- LINING THICKNESS 3 mm TO 4 mm.

DOVETAIL GROOVE FOR BETTER GRIP OF LINING

'V' GROOVE FOR ZERO LEAKAGE



DETAIL - 'E'

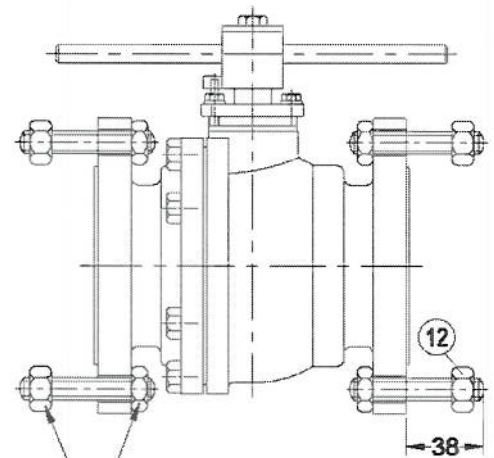
DESIGN STD. : BS 5159 / BS 5351

TESTING STD. : EN 12266-1

ALL DIMENSIONS ARE IN mm.

SIZE	15	20	25	40	50	65	80	100
A	108.0	117.3	127.0	165.0	177.8	190.5	203.2	228.6
B	225.0	225.0	225.0	325.0	450.0	450.0	450.0	750.0
C	95.0	100.0	110.0	130.0	140.0	150.0	175.0	215.0
ØD	15.0	20.0	25.0	40.0	50.0	62.0	75.0	100.0
WEIGHT - kgs	2.50	2.60	4.0	7.0	10.0	15.0	22.0	37.0
QTY.								
TAG NO.								

CODE	DUCTILE IRON	304	CB7Cu -1 (17- 4PH)	CS
MATERIAL SPECN.	ASTM A 395	A276 304	A747 CB7Cu -1 (17- 4PH)	A216 WCB



SPECIAL NUT  
MEDIUM SERIES

VALVE SIZE 15 SUPPLIED  
WITH LOOSE HOLES & STUD / NUT  
AS PER FLANGE STANDARD

INSPECTION

TEST	HYD.	SHELL	30 bar
		SEAT	22 bar
	AIR	SEAT	6 bar
	SPARK	100 % SPARK TESTING AT 10 KVA FOR ALL LINED PARTS IN CONTACT WITH FLUID	

CUSTOMER : \_\_\_\_\_  
ORDER NO. : \_\_\_\_\_  
JOB/PROJECT : \_\_\_\_\_

APPROVED :

CHECKED :

DRAWN :

FOR RECORD

FOR APPROVAL